

Outline drawing and motion range of COBOTTA

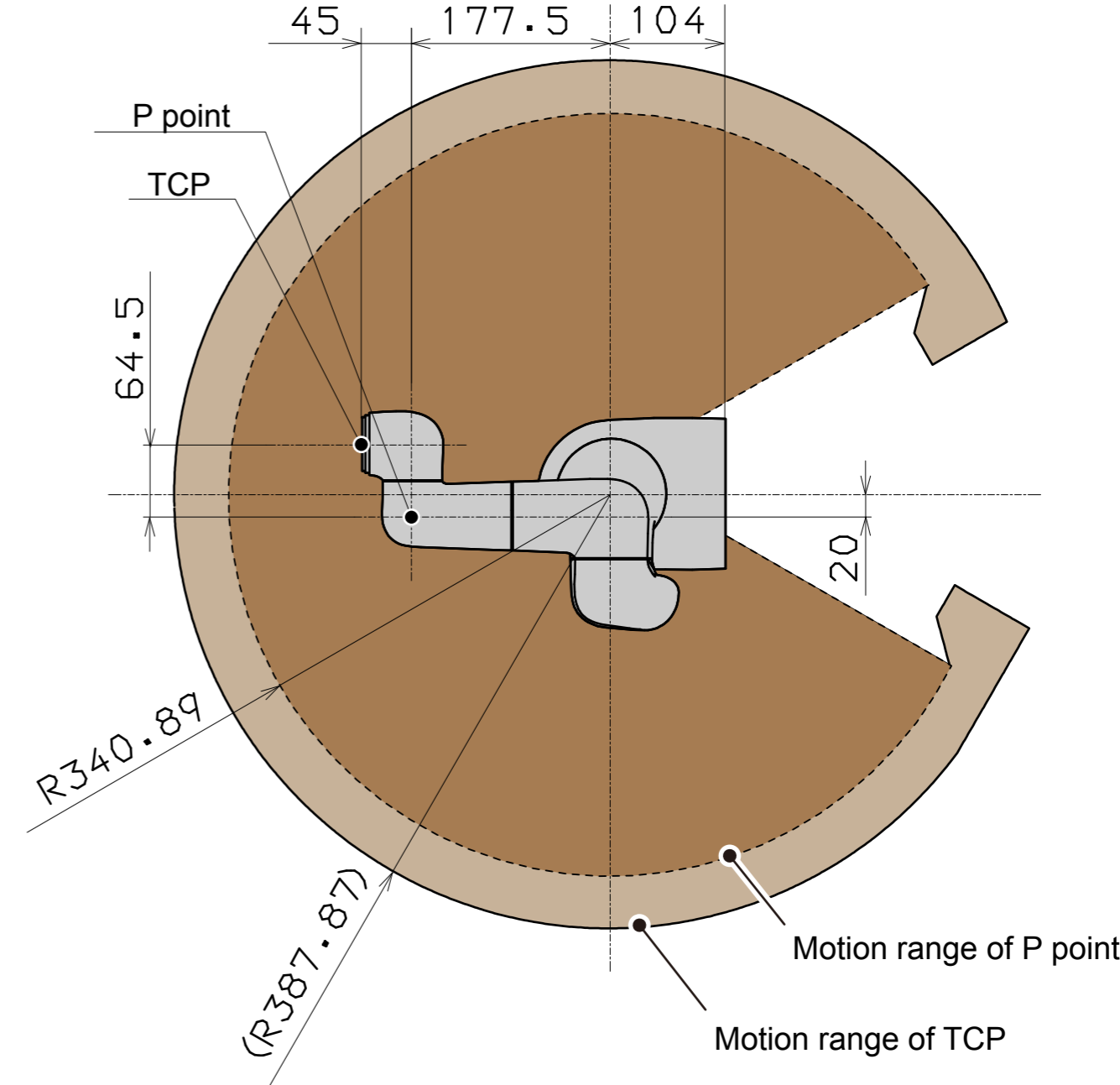
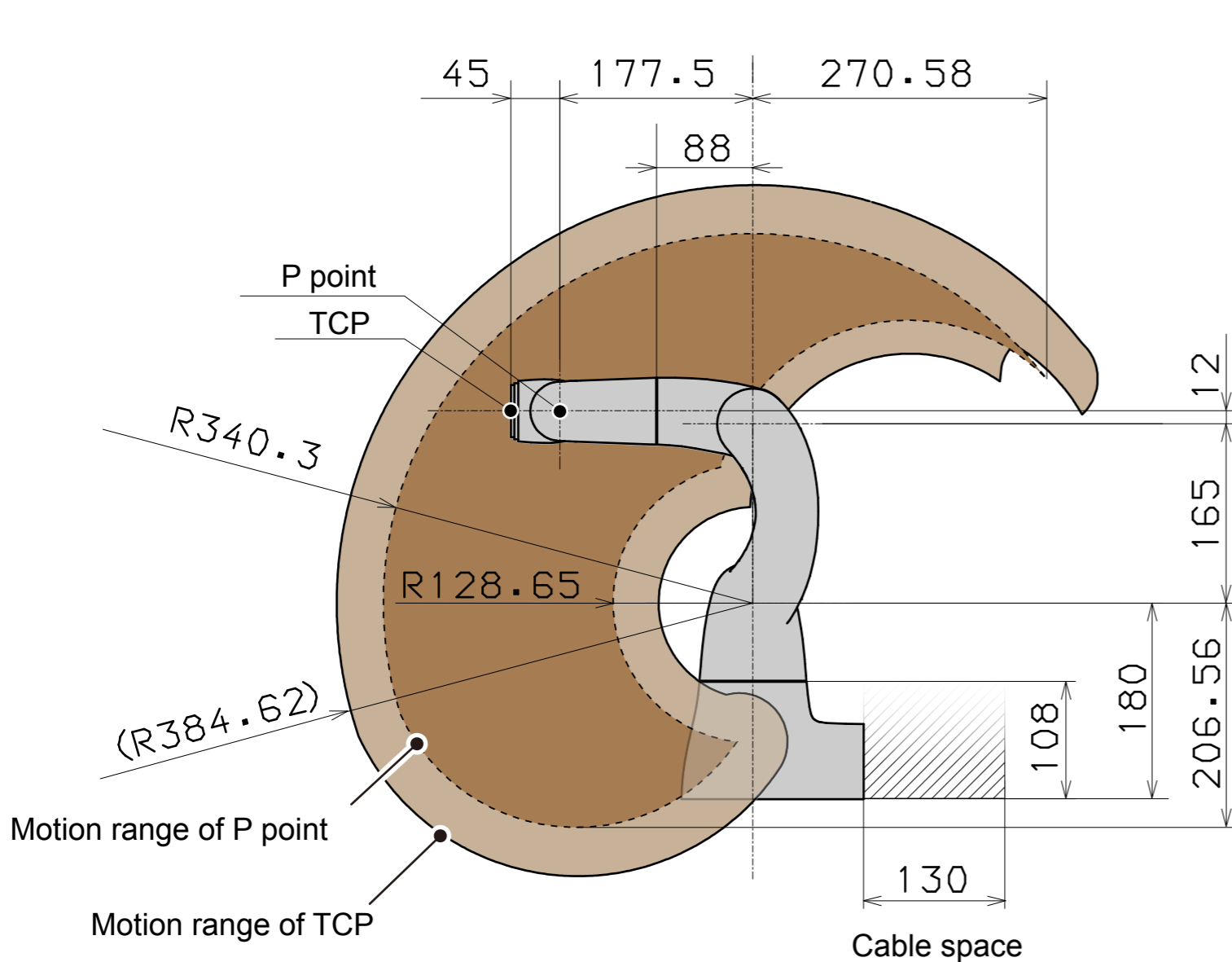
This section describes drawings in each of the following items.

Clicking each title jumps to the drawing with the corresponding title.

- [Outline drawing and motion range of COBOTTA \(without option\)](#)
- [Outline drawing and motion range of COBOTTA \(with option\)](#)
- [Dimensions of screw holes for fixing COBOTTA \(common in products with or without option\)](#)
- [Dimensions of COBOTTA camera mounting holes \(common in products with or without option\)](#)

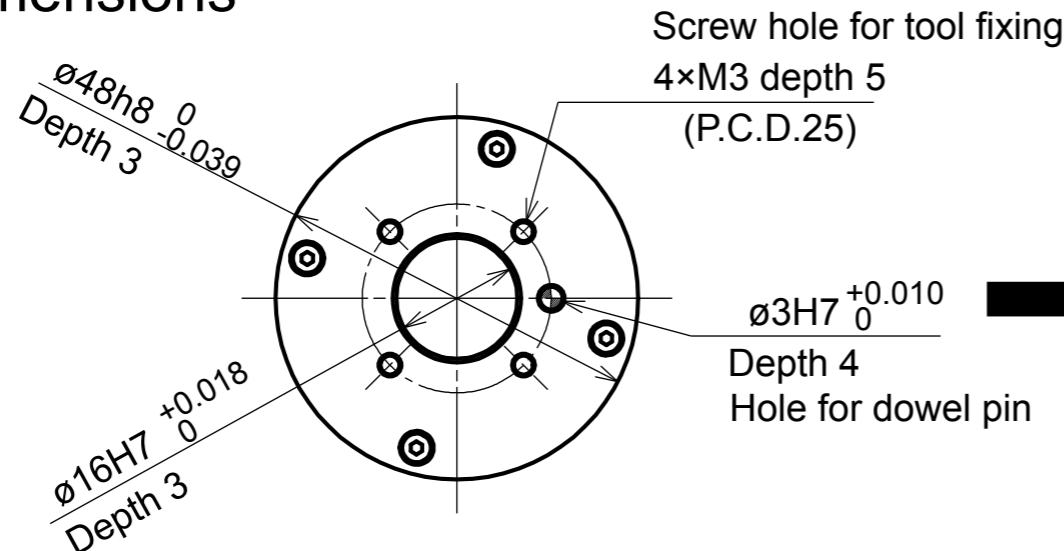
Outline Drawing and Motion Range of COBOTTA (without option)

Unit: mm

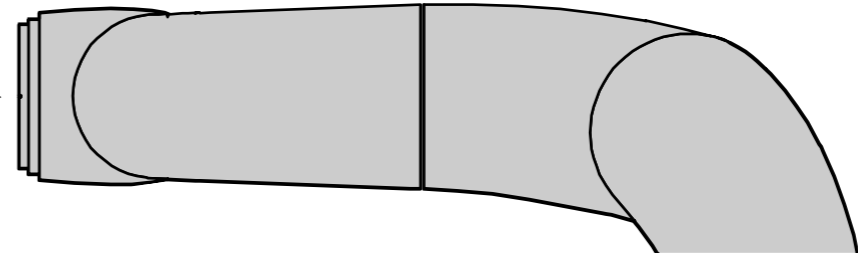


Flange dimensions

View A



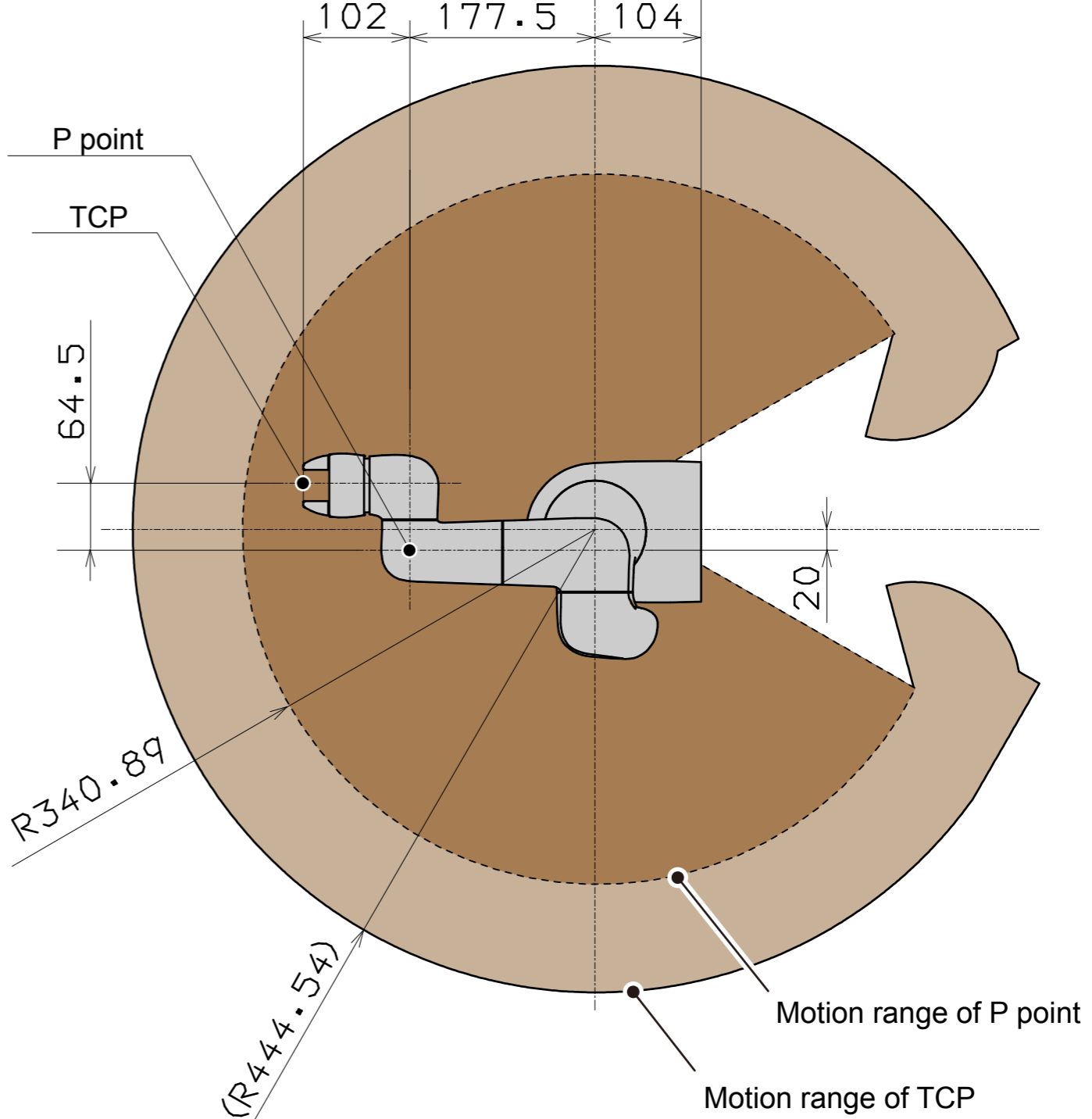
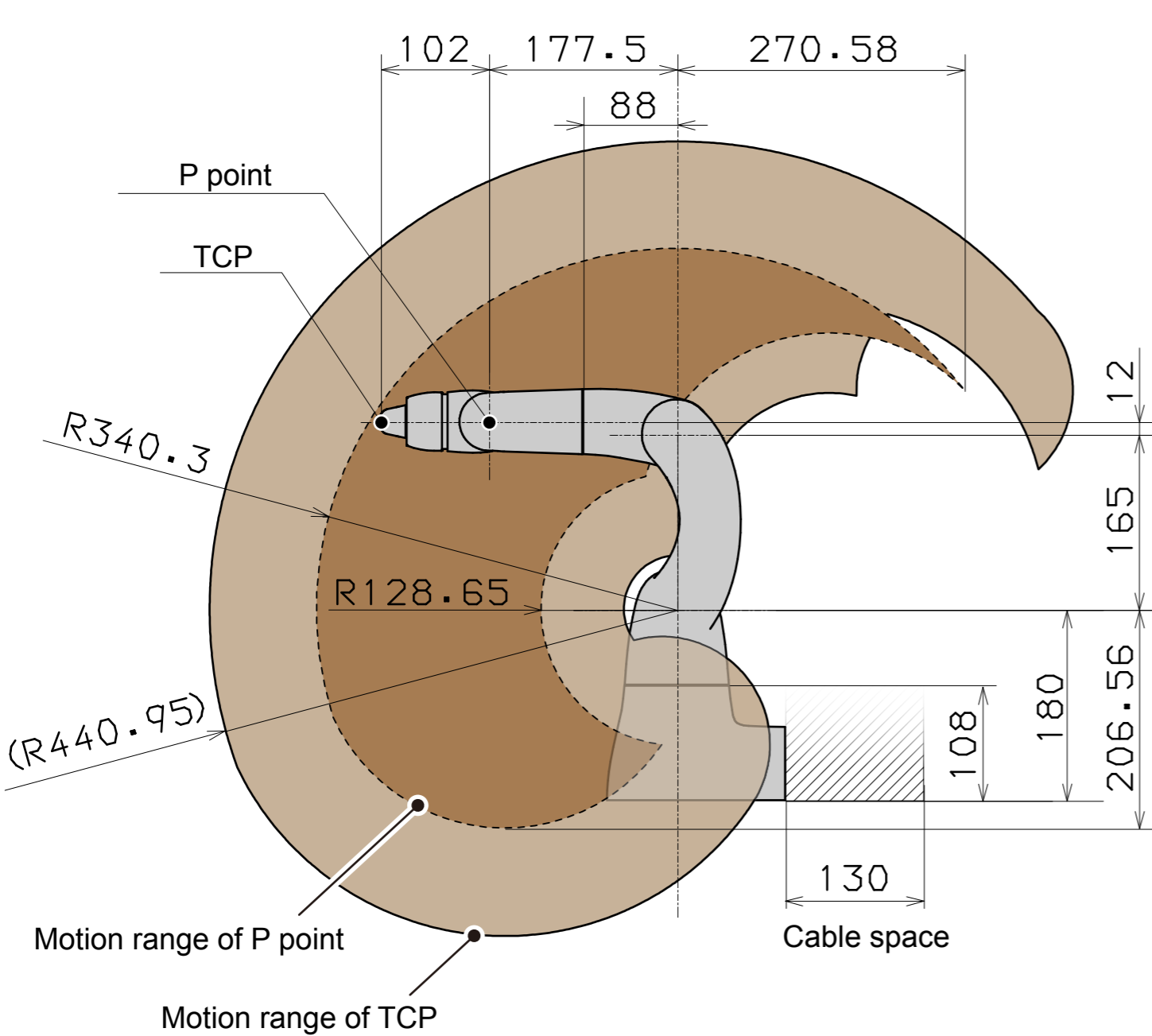
A



Outline drawing and motion range of COBOTTA (with option)

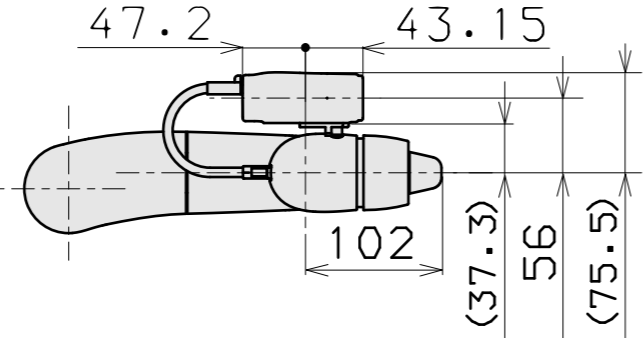
Unit: mm

■ Outline drawing of COBOTTA with an electric gripper for COBOTTA mounted and motion range

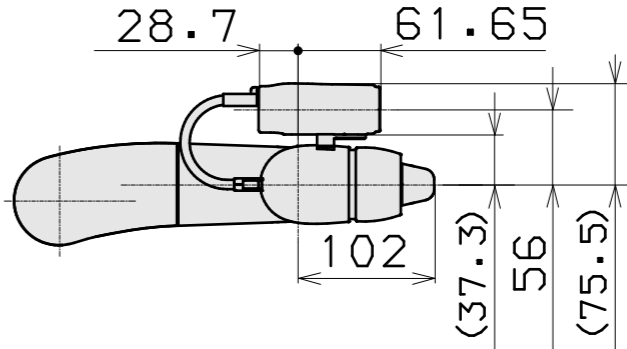


■ Outline drawing of COBOTTA with an electric gripper for COBOTTA and an AF camera mounted

■ COBOTTA currently delivered

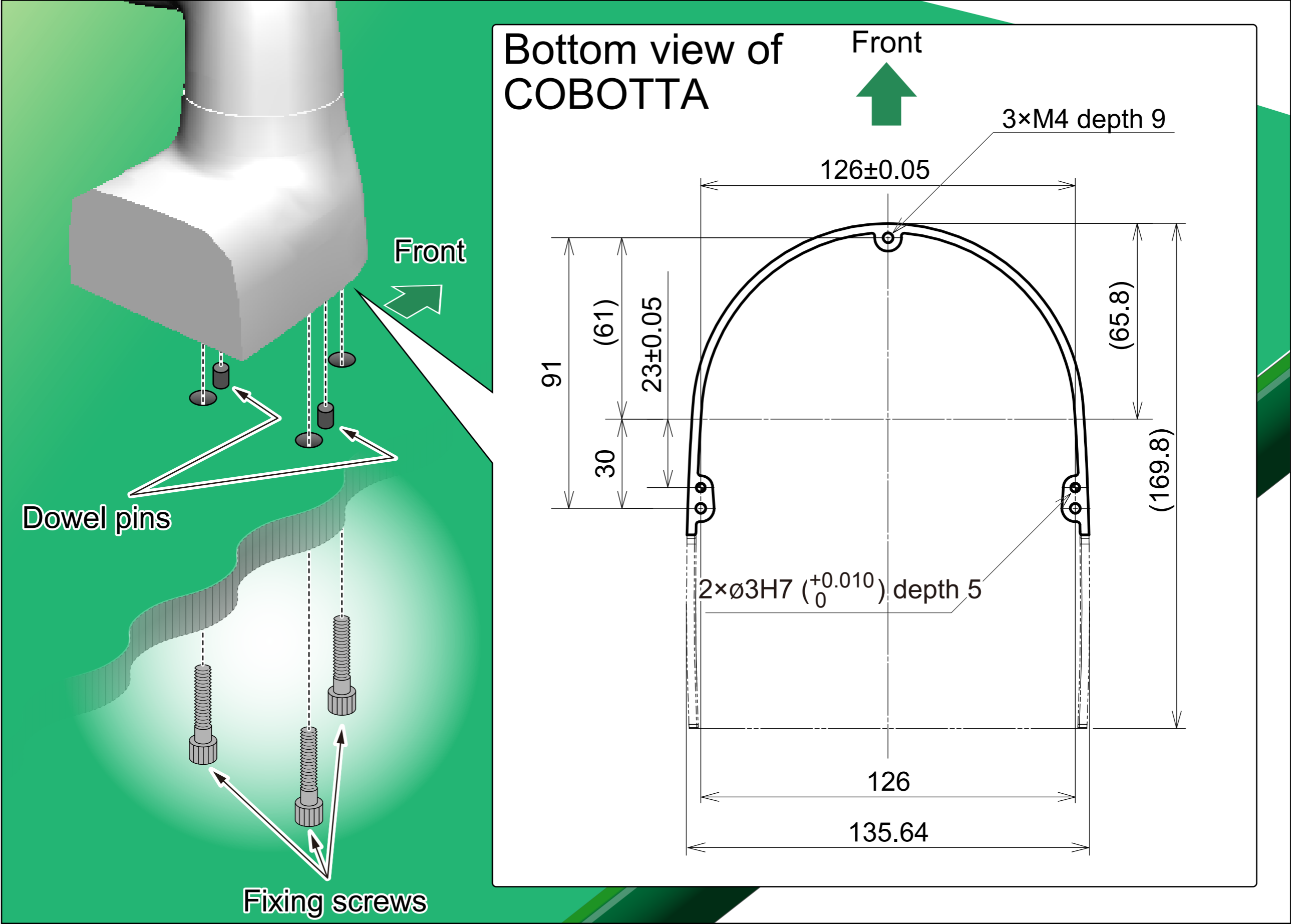


■ COBOTTA shipped before 2019 February



Dimensions of screw holes for fixing COBOTTA (common in products with or without option)

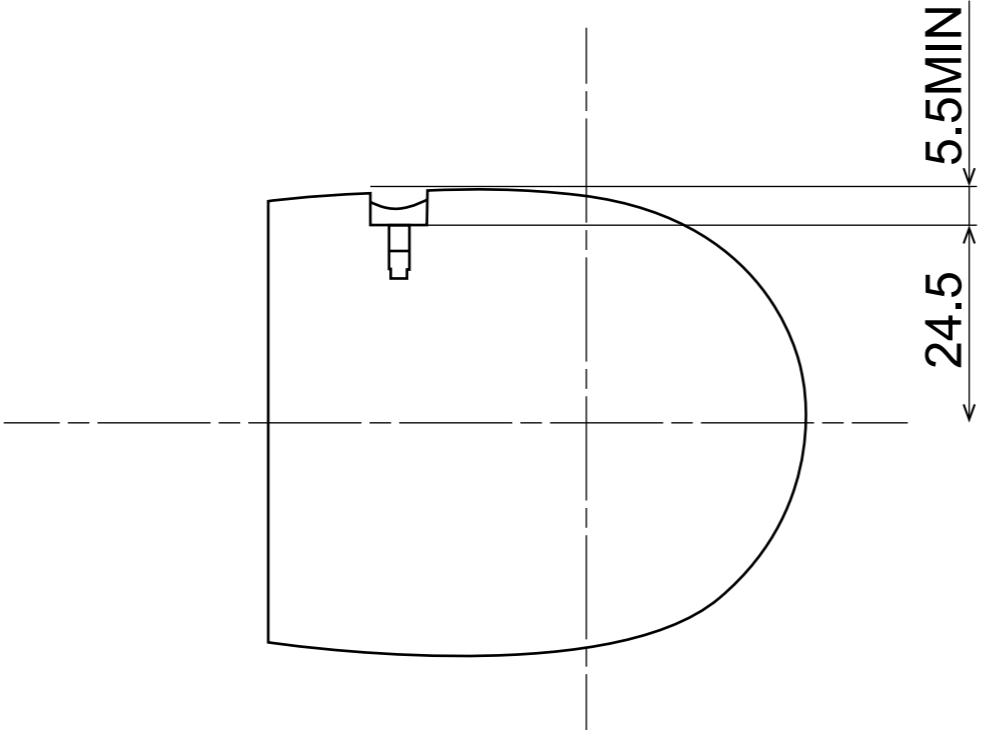
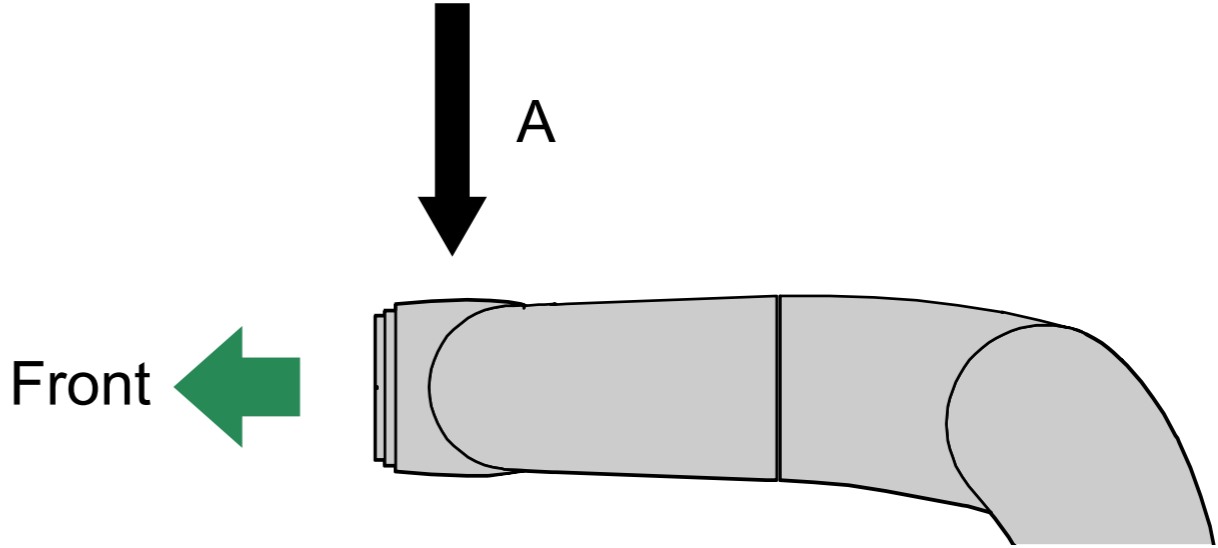
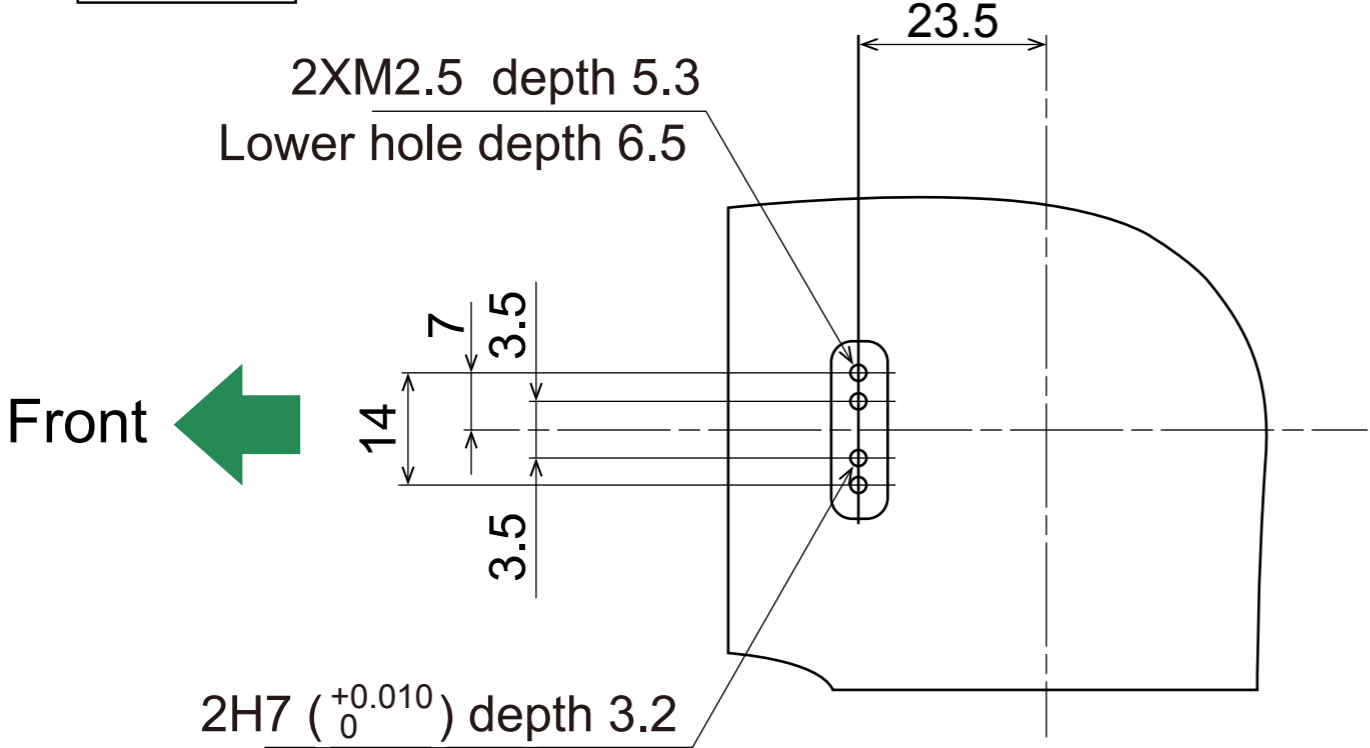
Unit: mm



Dimensions of COBOTTA camera mounting holes (common in products with or without option)

Unit: mm

View A



Reference dimensions of mounting parts

