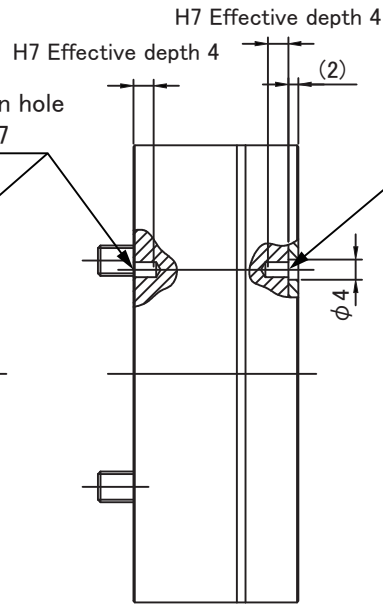
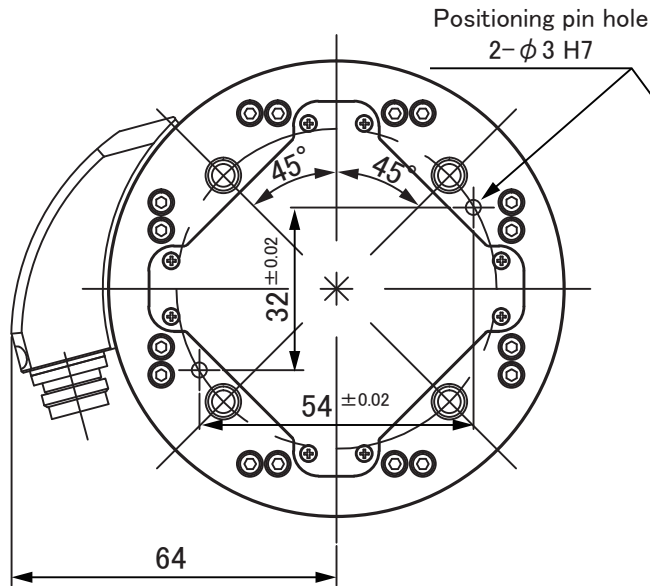
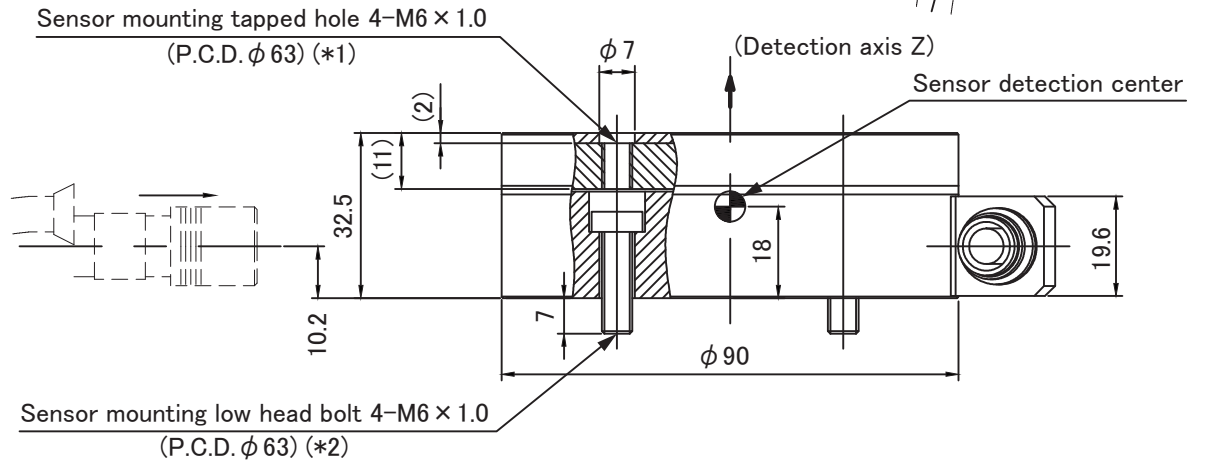
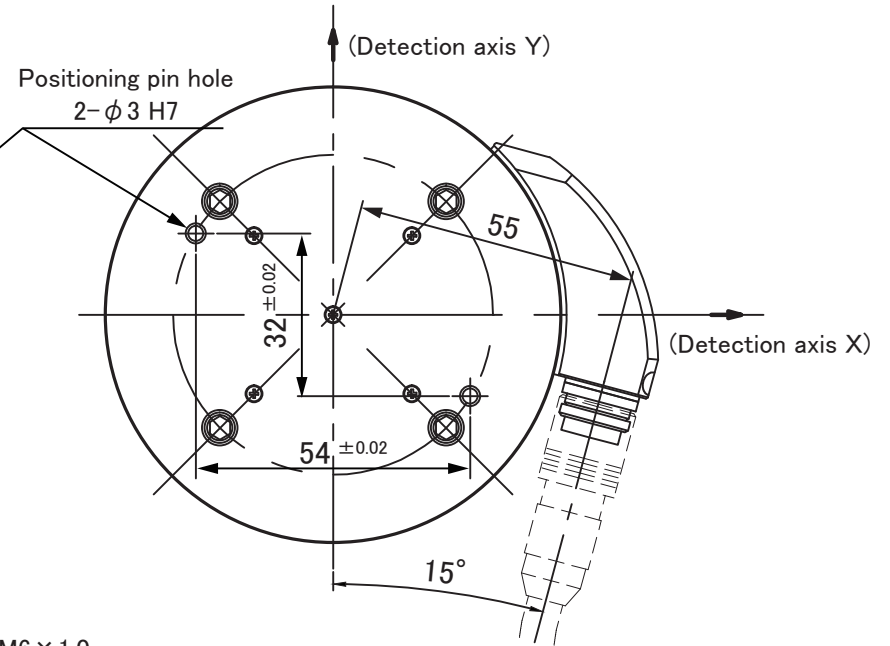


Mount side



Tool side



- *1 Tool section recommended mounting conditions
 - Bolt strength category: A2-50
 - Tightening torque: 10Nm ($\pm 10\%$)
 - Thread section engagement length: 10~12mm from mounting surface on tool section side
(Make sure that engagement length is 12mm or less. If it is exceeded, the sensor may fail.)
- *2 Mount section recommended mounting conditions
 - Tightening torque: 10Nm ($\pm 10\%$)
- *3 Recommended positioning pin
 - Pin dimension: $\phi 3$ g6 Length 9~12mm