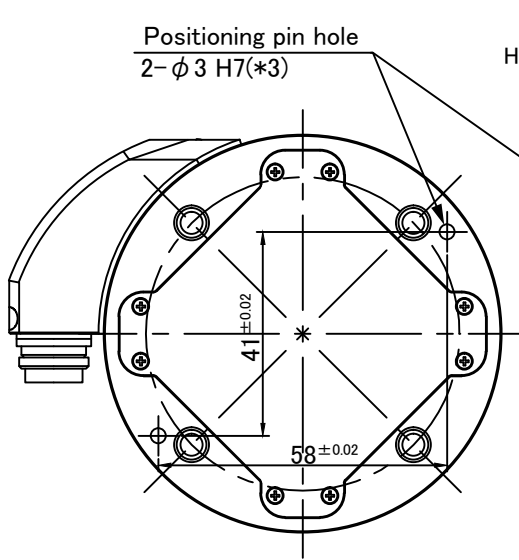
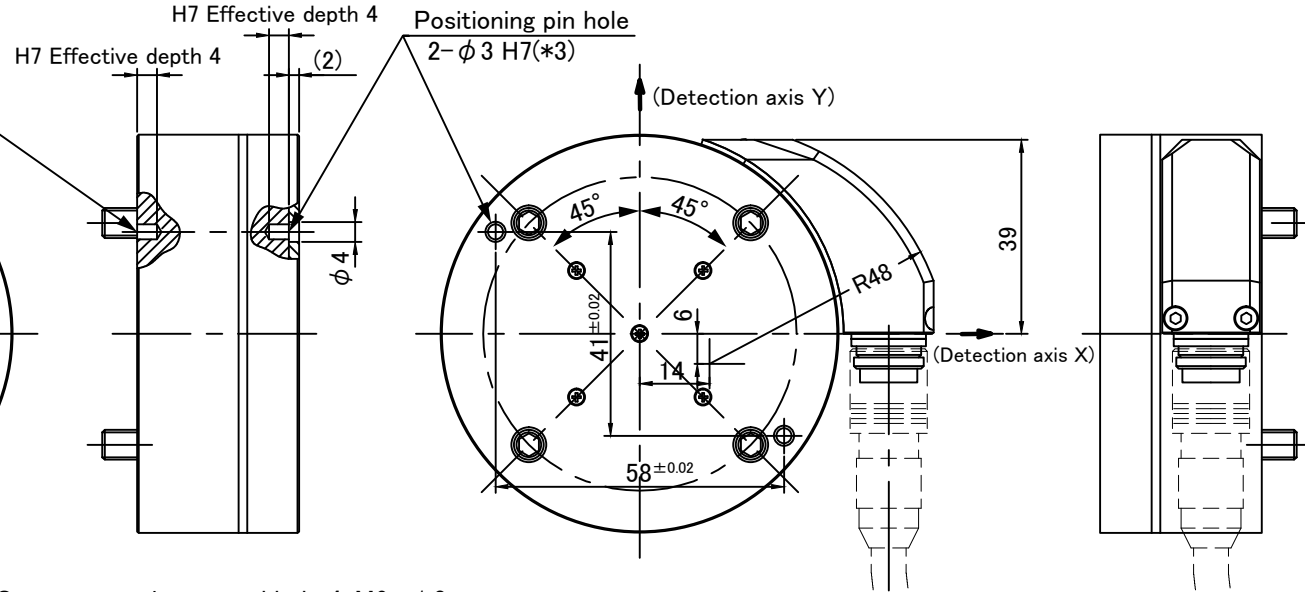


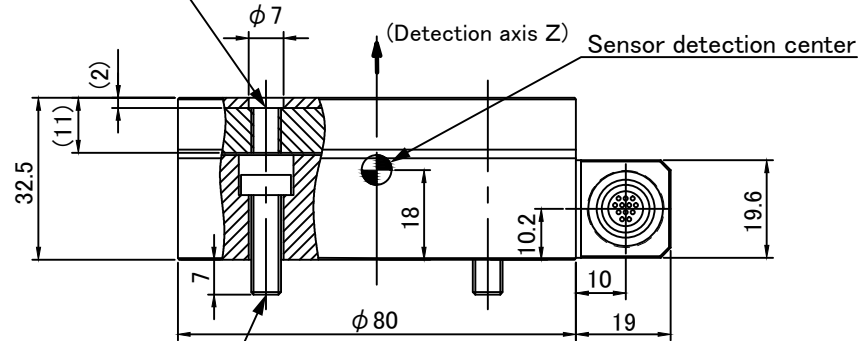
Mount side



Tool side



Sensor mounting tapped hole 4-M6 \times 1.0
(P.C.D. $\phi 63$) (*1)



Sensor mounting low head bolt 4-M6 \times 1.0
(P.C.D. $\phi 63$) (*2)

- *1 Tool section recommended mounting conditions
- Bolt strength category: A2-50
 - Tightening torque: 6Nm ($\pm 10\%$)
 - Thread section engagement length: 10~12mm from mounting surface on tool section side (Make sure that engagement length is 12mm or less. If it is exceeded, the sensor may fail.)
- *2 Mount section recommended mounting conditions
- Tightening torque: 6Nm ($\pm 10\%$)
- *3 Recommended positioning pin
- Pin dimension: $\phi 3$ g6 Length 9~12mm