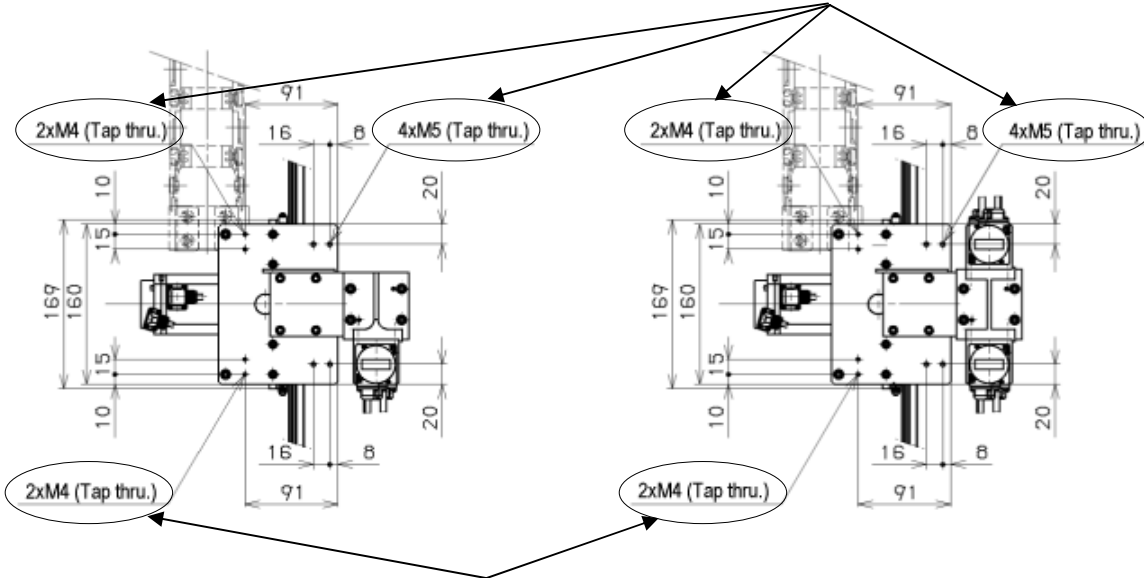


■ Existing Internal Threads for Wiring and Piping

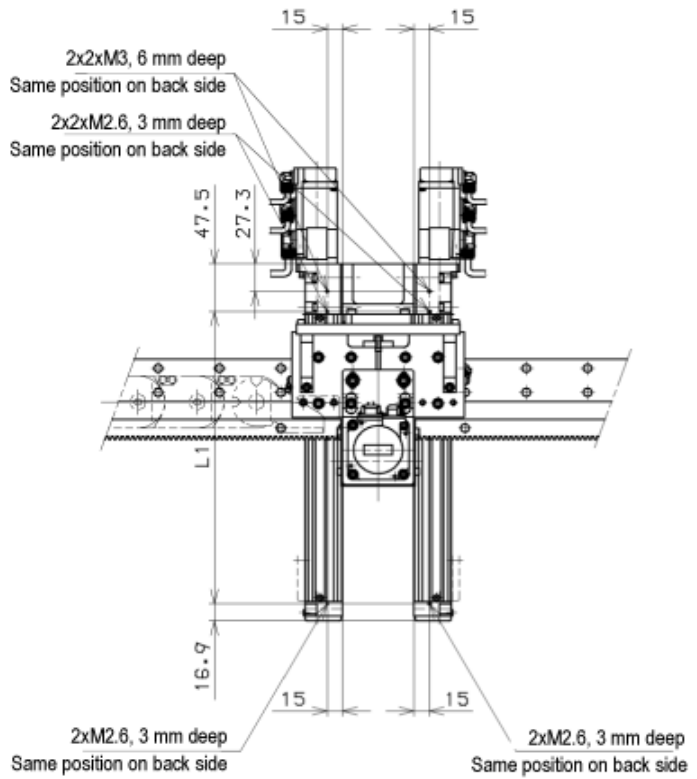
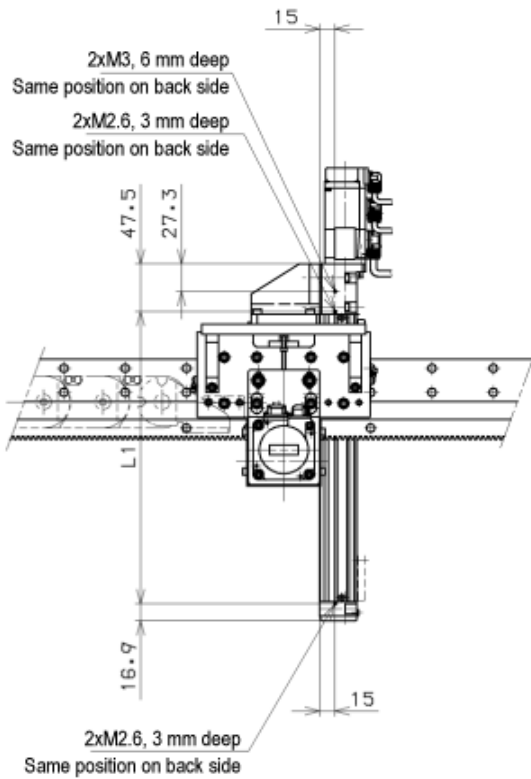
LZNN, LZZN

Unit: mm

When using this screw hole, fix with a screw length of [the thickness of the mounting part + 10 mm] or shorter

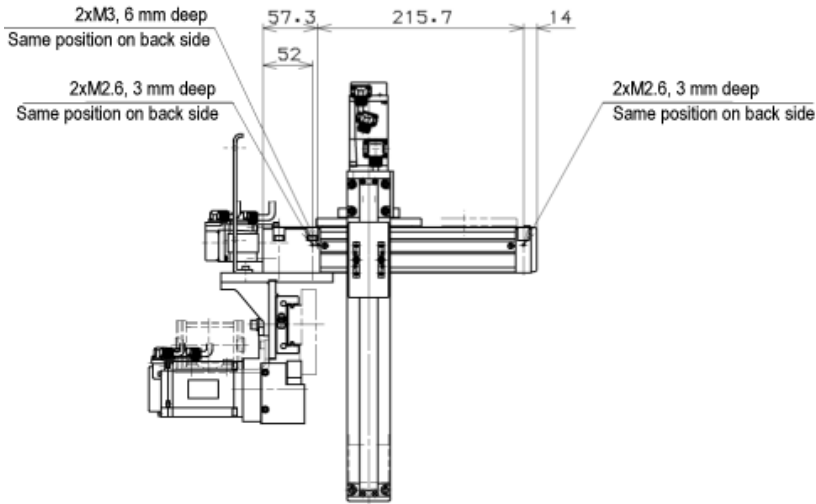
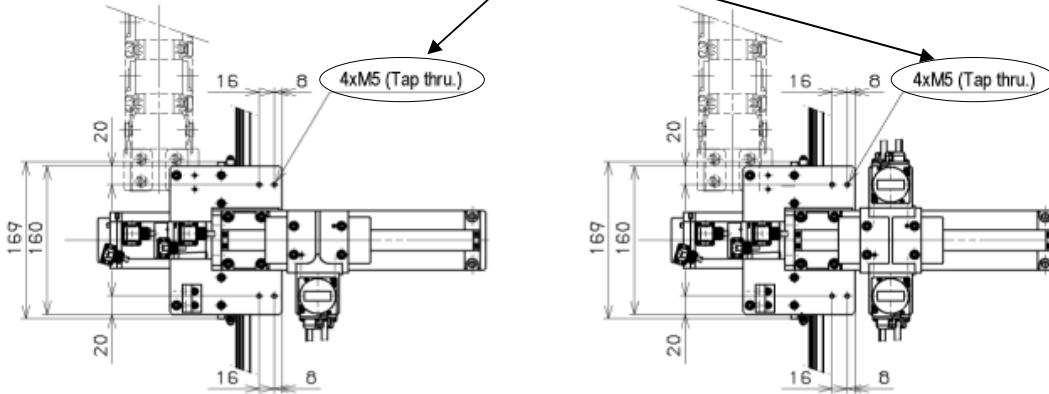


When using this screw hole, fix with a screw length of [the thickness of the mounting part + 10 mm] or

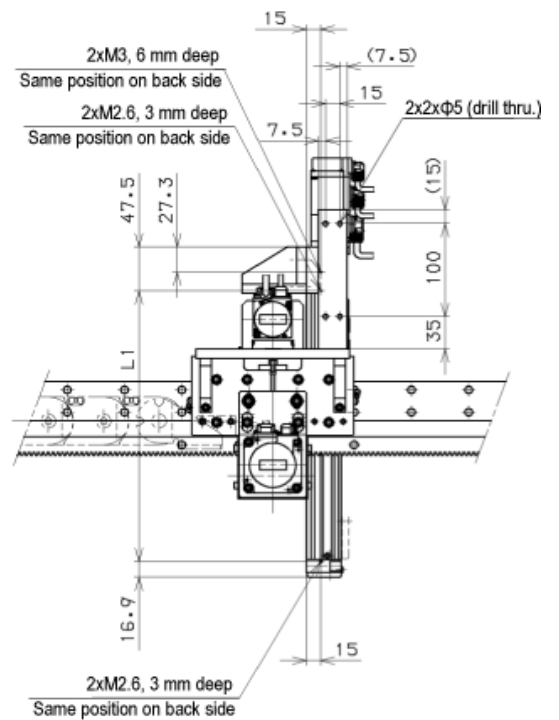
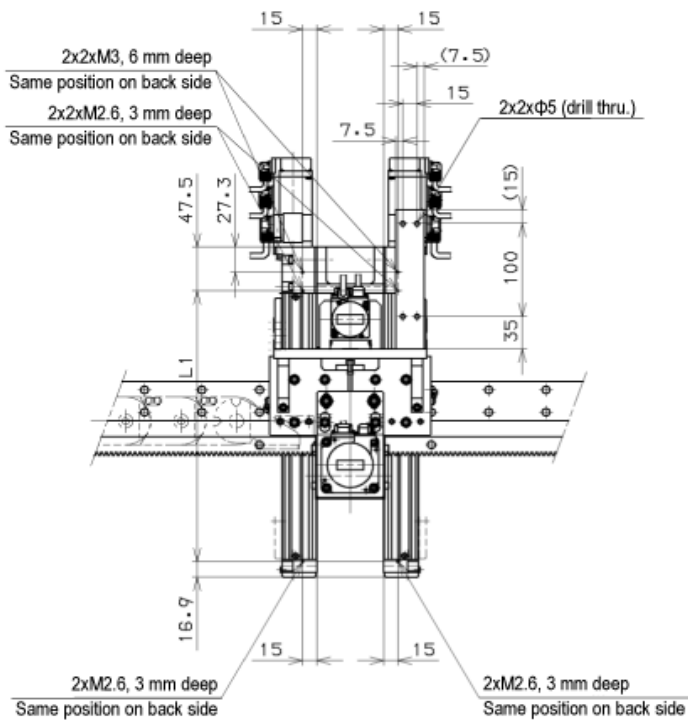


Z axis	
Stroke	L1
100	191.6
200	291.6

When using this screw hole, fix with a screw length of [the thickness of the mounting part + 10 mm] or shorter



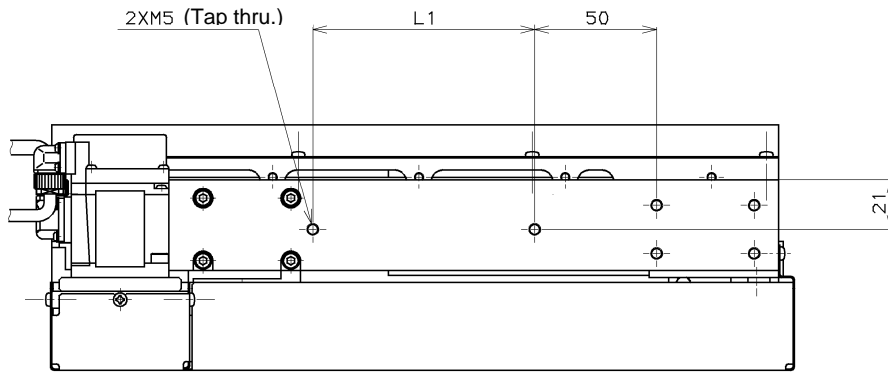
Z axis	
Stroke	L1
100	191.6
200	291.6



■ Existing Internal Threads for Wiring and Piping

LSNN, LSSN, LZSN, LZSS

Unit: mm



S axis	
Stroke	L1
300	41
400	91