

Sensor

Absolute Encoder

Resolution 131072P/R(17bit)

Amount of maximum multi-turn counts 65536(16bit)

Measures for PS encoder alarm:

- Bonded bias magnet at 3 point.
- There should be no adhesives on comparator terminal.

Identification:

- SERVO MOTOR OUTLINE DRAWINGS Rev. is added after model of an encoder memory.

Degrees of protection

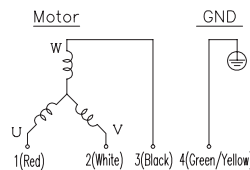
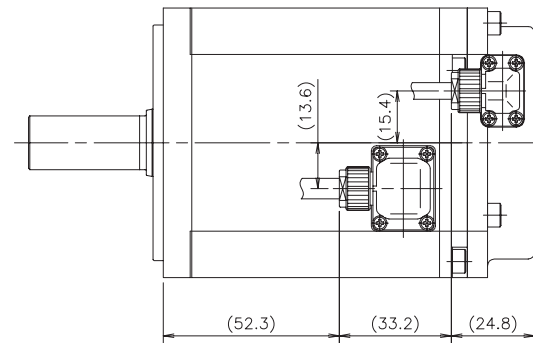
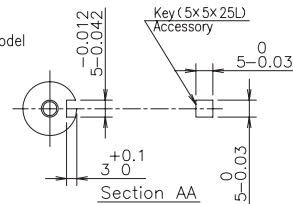
IP67(except for the shaft hole and the edge of the cable)

Motor Mass

2.7kg

Accessory

Key (5x5x25L)



Direction of rotation is C.C.W for phase sequence UVW, as seen from front shaft.

Sensor

Connector: SMR-04V-N

Pin No.	Signal	Color	Pair
1	+5V	Red	□
2	0V	Black	□
3	ES+	Brown	□
4	ES-	Blue	□

Connector: SMR-02V-N

Pin No.	Signal	Color	Pair
1	EBAT+	Pink	□
2	EBAT-	Purple	□