

Sensor

Absolute Encoder
Resolution 131072P/R(17bit)
Amount of maximum multi-turn counts 65536(16bit)

Measures for PS encoder alarm:
Bonded bias magnet at 3 point.
There should be no adhesives on comparator terminal.

Identification:
SERVO MOTOR OUTLINE DRAWINGS Rev. is added after model of an encoder memory.

Degrees of protection

IP67(except for the shaft hole and the edge of the cable)

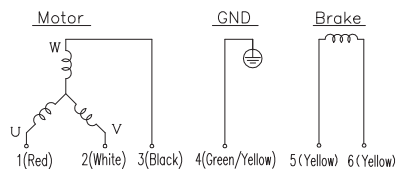
Motor Mass

4.2kg

Accessory

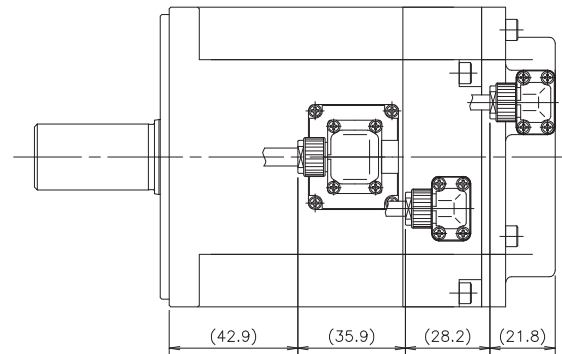
Key (6x6x32L)

Connection



Direction of rotation is C.C.W for phase sequence UVW, as seen from front shaft.

Cable for motor (For fix)
Motor Ground 0.75mm²
Cable for brake (For fix)
AWG23
Connector (For motor+brake)
AMP
Connector: 172160-1
Contact (For motor): 170364-1 (Loose piece)
or 170360-1 (Strip form)
(For brake): 170363-1 (Loose piece)
or 170359-1 (Strip form)
Shield cable (For fix)
AWG26, 3pair
Connector (For sensor)
JST
Connector: SMR-02V-N
Contact: SYM-001GW-0.6A
JST
Connector: SMR-04V-N
Contact: SYM-001GW-0.6A



Sensor

Connector: SMR-04V-N

| Pin No. | Signal | Color | Pair |
|---------|--------|-------|------|
| 1 | +5V | Red | |
| 2 | 0V | Black | |
| 3 | ES+ | Brown | |
| 4 | ES- | Blue | |

Connector: SMR-02V-N

| Pin No. | Signal | Color | Pair |
|---------|--------|--------|------|
| 1 | EBAT+ | Pink | |
| 2 | EBAT- | Purple | |